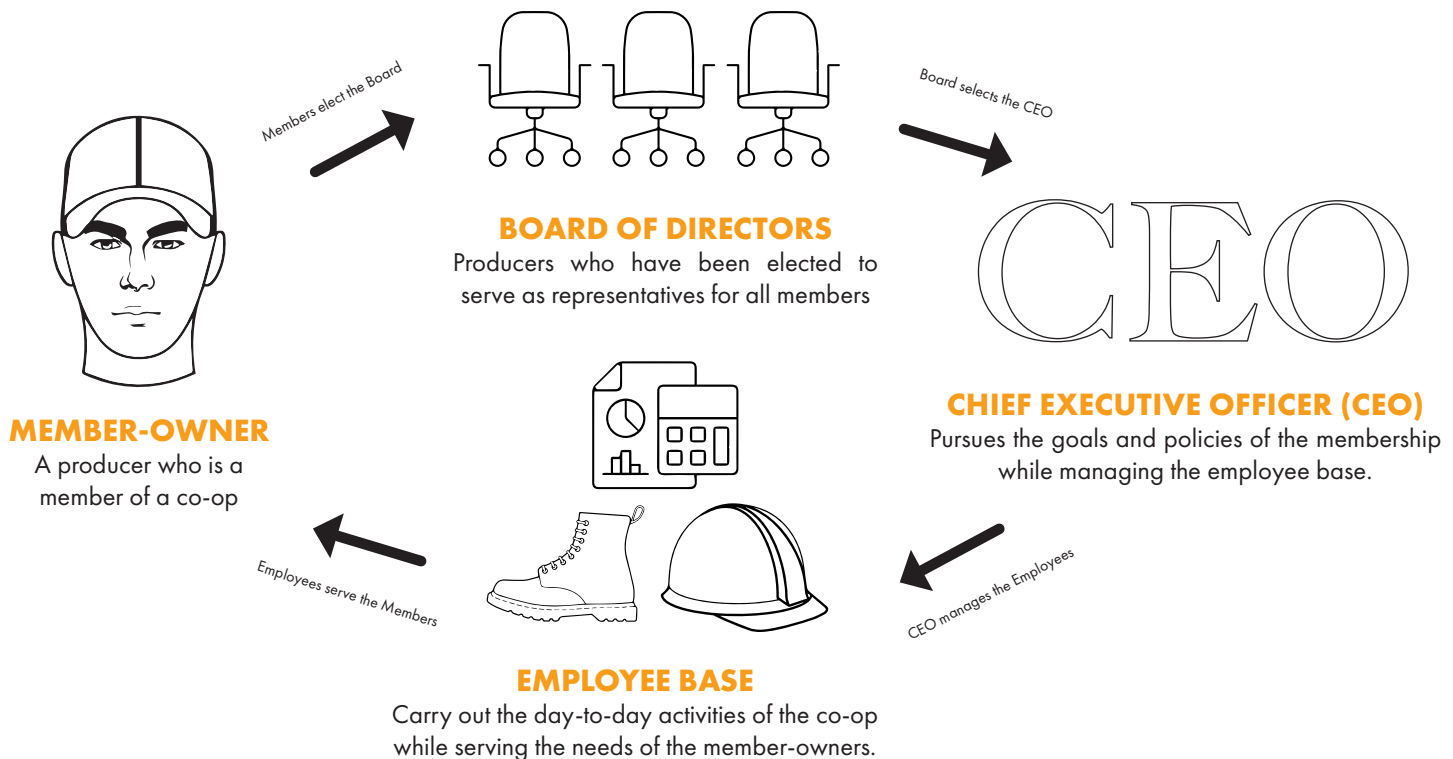


GROWING AGRICULTURE *together.*

MEMBER CONTROL

Cooperatives are different from other business models in that the members are the foundation of the cooperative model. Their needs are the reason for the existence of the co-op. Members have ownership in the co-op and therefore, have a say in what happens at the co-op. In fact, all members have equal say in the cooperative as it's one member - one vote.

ORGANIZATION OF A CO-OP:



HOW DO MEMBERS SHOW OWNERSHIP IN THE COOPERATIVE?

In most co-ops, members don't make all the decisions directly. Members exercise control over a co-op directly by voting and indirectly through election of a board of directors. Below are a list of additional ways members can control their cooperatives.

